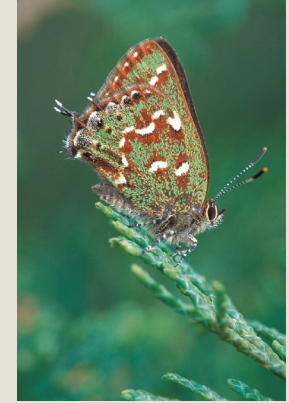




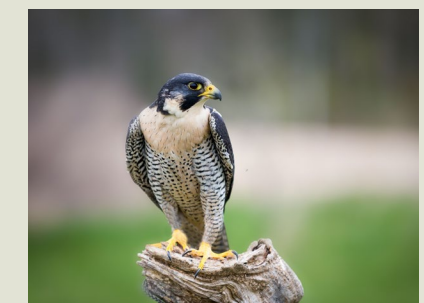
MDIFW Updates for MAWS: *IFW Reorganization, Species Status Lists, LD 1246*



Phillip deMaynadier, Ph.D.

Wildlife Diversity Section
Maine Department of Inland Fisheries & Wildlife

March 21, 2023

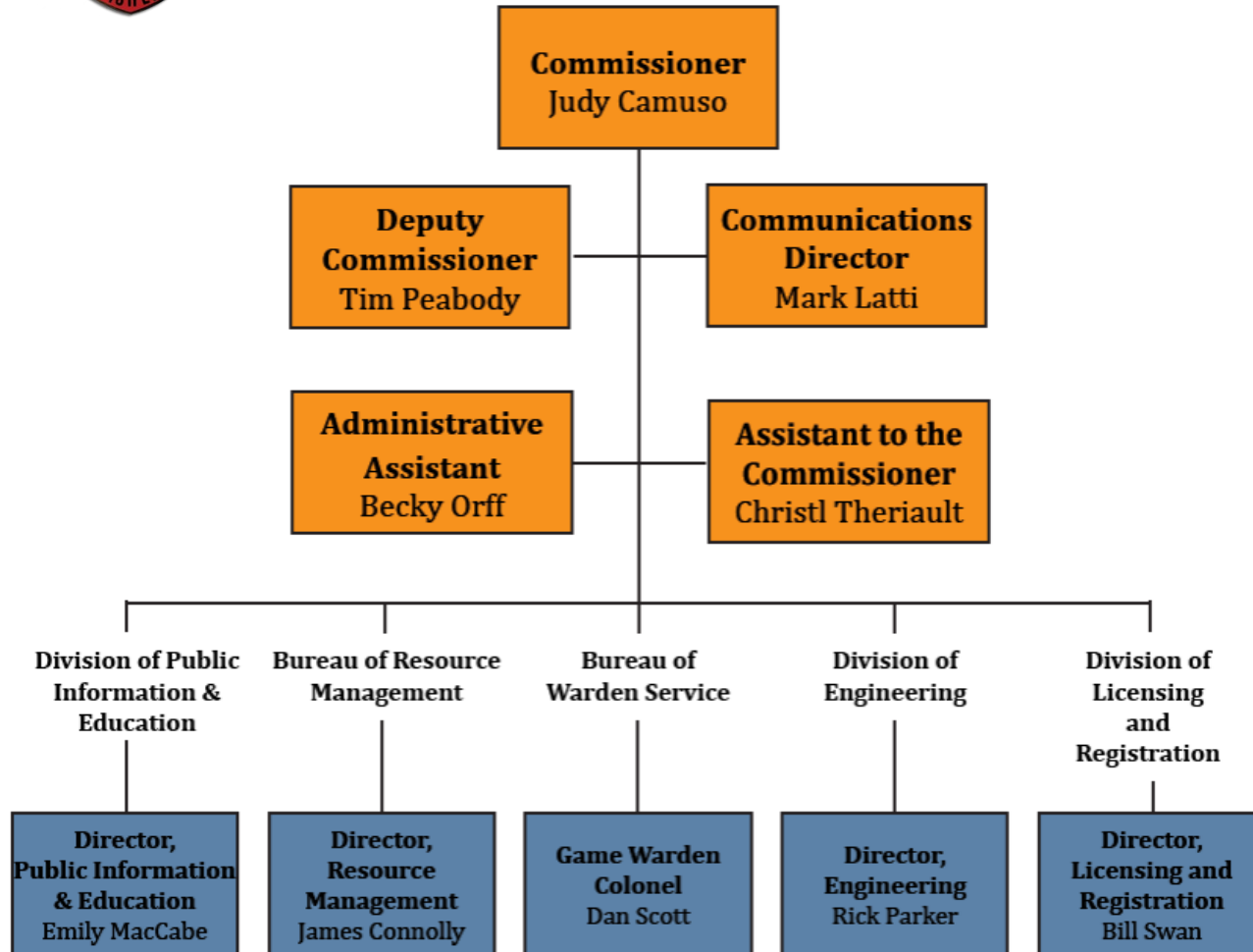


Reorganization of the Bureau of Resource Management



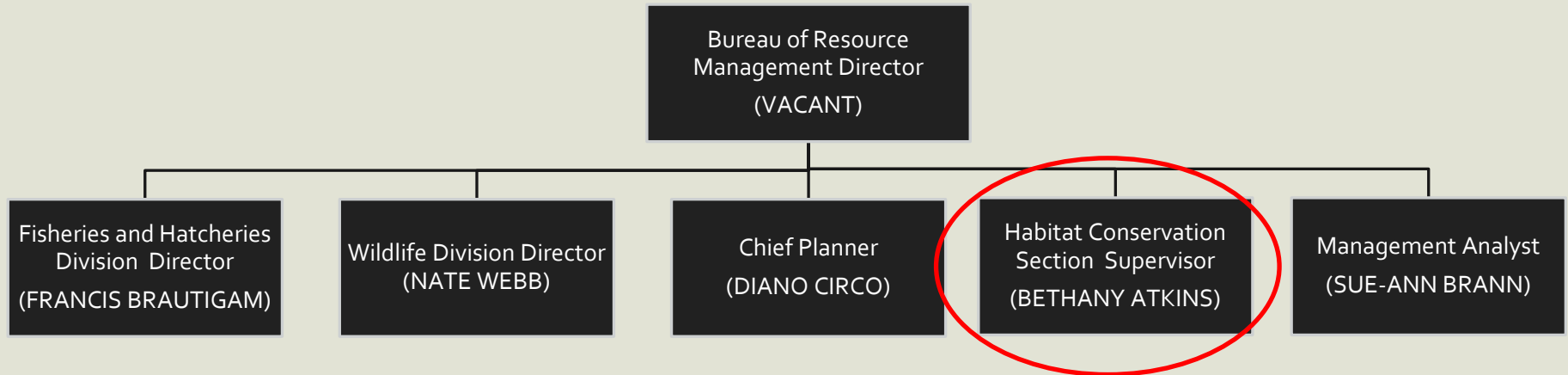


*As of December 14, 2020



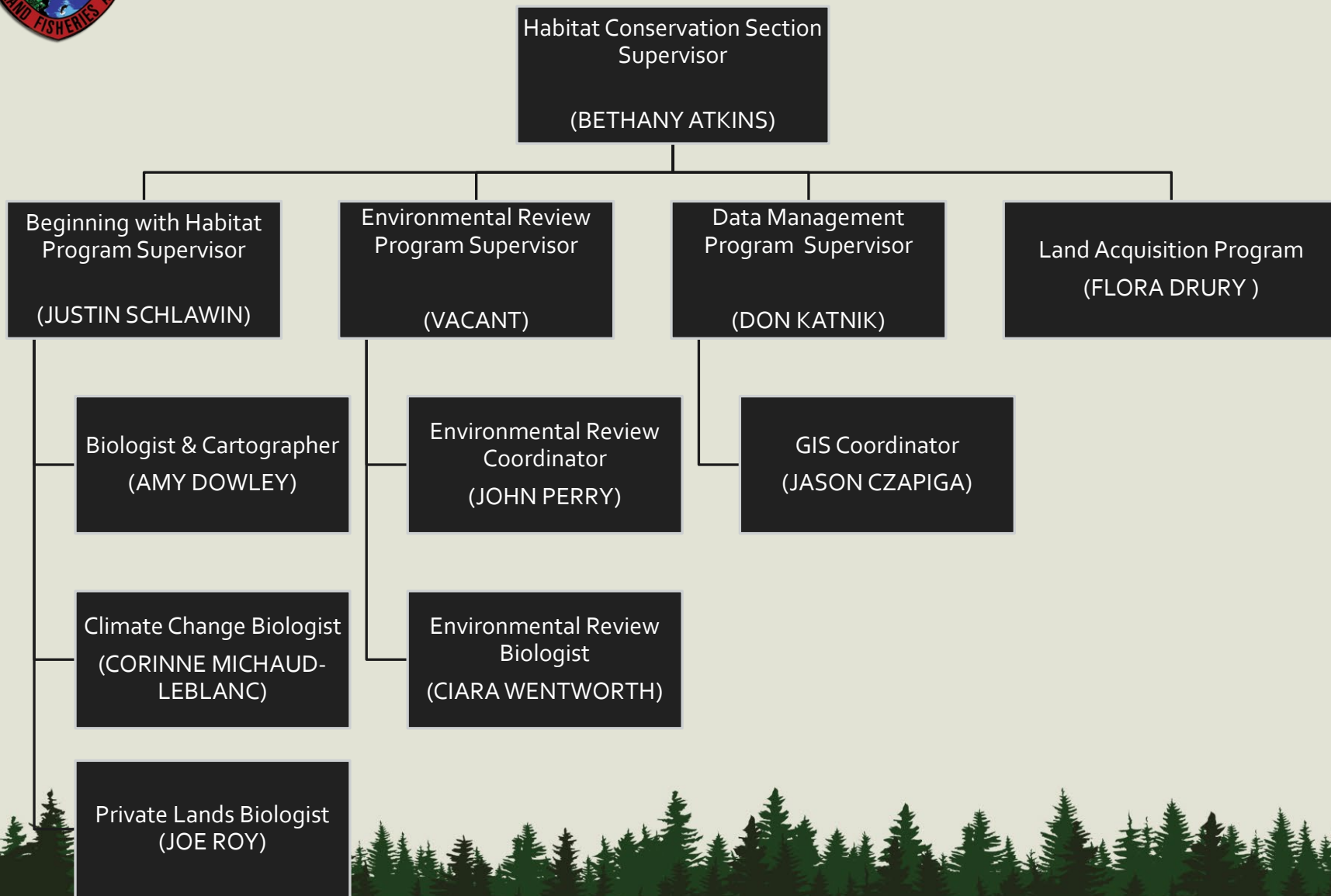


Bureau of Resource Management



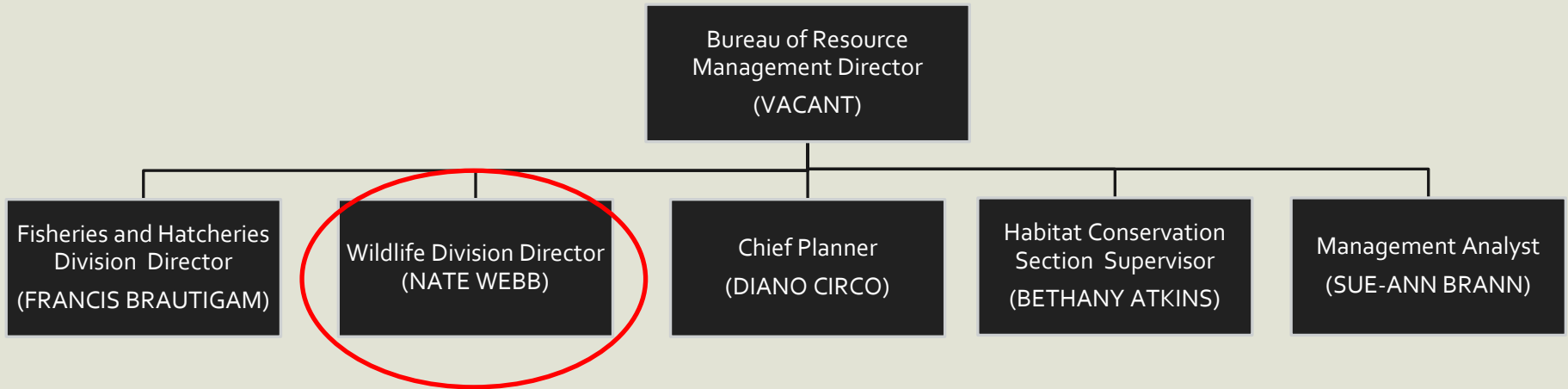


Habitat Conservation Section





Bureau of Resource Management





Wildlife Division

Wildlife Division Director
(NATE WEBB)

Wildlife Health Biologist
(TEGWIN TAYLOR)

Game Research & Mgt
Section Supervisor
(JEN VASHON)

Wildlife Diversity
Section Supervisor
(P. DEMAYNADIER)

Wildlife Management
Section Supervisor
(RYAN ROBICHEAU)

Special Projects
Coordinator
(BOB CORDES)

8 Staff

10 Staff

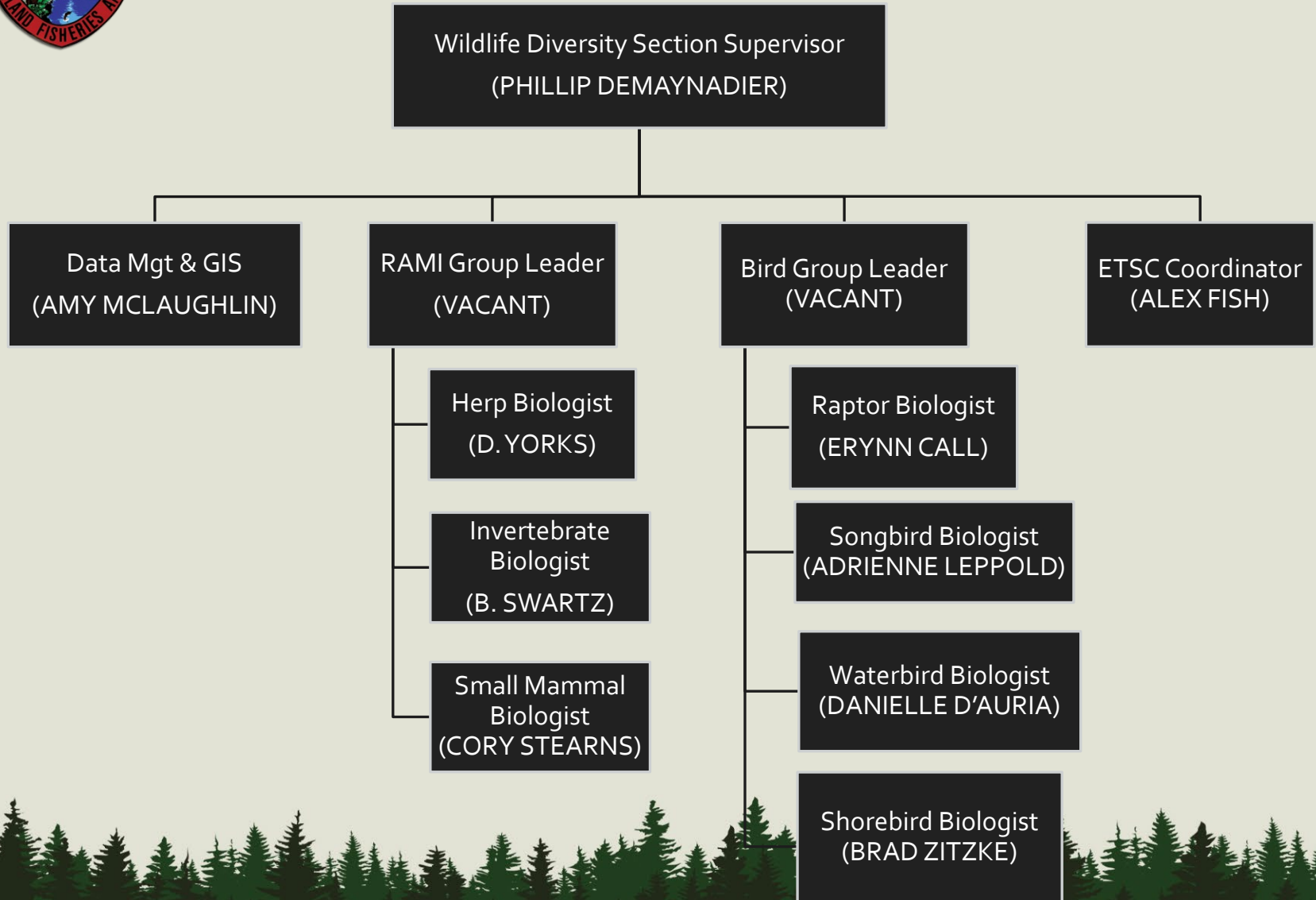
24 Staff

2 Staff





Wildlife Diversity Section



At-Risk Species Updates

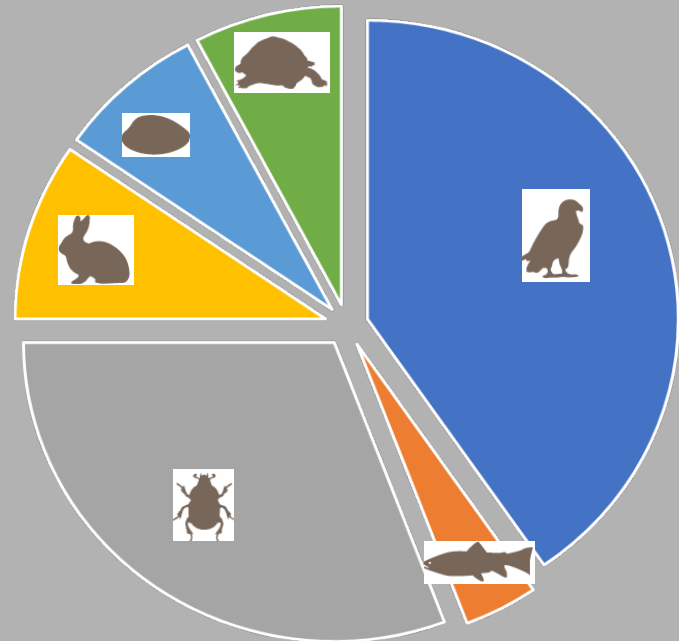


Maine's At-Risk Species

IFW Endangered & Threatened: 57 (law)

IFW Special Concern: 112 / 84* (rule)

SGCN: 378 (policy)



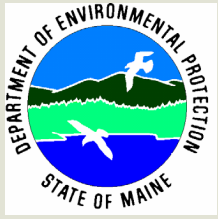
MAINE'S
ENDANGERED WILDLIFE

Maine Inland Fisheries & Wildlife • www.mefishwildlife.com



LD 1246: An Act to Include Endangered &
Threatened Species Habitat in the Definition of
"Significant Wildlife Habitat" Under the NRPA

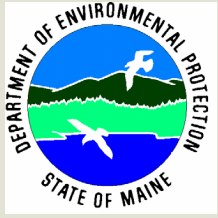




Natural Resources Protection Act (1988) Significant Wildlife Habitat (1998)

- ✓ Endangered & Threatened Species Habitat *
- ✓ Deer Wintering Areas
- ✓ Atlantic Salmon Spawning & Nursery Areas
- ✓ Seabird Nesting Islands
- ✓ Waterfowl and Wading Bird Areas
- ✓ Shorebird Nesting, Feeding, & Staging Areas
- ✓ Significant Vernal Pools





Natural Resources Protection Act (1988) Significant Wildlife Habitat (1998) **Chapter 335 Rules**

- ✓ Endangered & Threatened Species Habitat *
 - ✓ Deer Wintering Areas
 - ✓ Atlantic Salmon Spawning & Nursery Areas
-
- ✓ Seabird Nesting Islands (1998)
 - ✓ Waterfowl and Wading Bird Areas (2006)
 - ✓ Shorebird Nesting, Feeding, & Staging Areas (2006)
 - ✓ Significant Vernal Pools (2007)



Sponsor and Agency Support

Sponsor: Rep. Lori Gramlich (D; ENR co-chair)

Co-sponsors: Sen. Brenner (D; ENR co-chair), Rep. Bell (D; ENR), Rep. Campbell (R; ENR), Rep. Cluchey (D), Rep. Doudera (D; ENR), Rep. Landry (D), Rep. O'Neil (D; ENR), Rep. Soboleski (R; ENR), and Sen. Bennett (R)

Natural Resource Agencies: MDEP / MDACF-LUPC / MDIFW



LD 1246: An Act to Include Endangered & Threatened Species Habitat in the Definition of "Significant Wildlife Habitat" Under the NRPA [w/ proposed amendment]

38 MRS §480-B Definitions

10. **Significant Wildlife Habitat** "Significant wildlife habitat" means:

A. The following areas to the extent that they have been mapped by the Department of Inland Fisheries and Wildlife or are within any other protected natural resource: ~~habitat, as defined by the Department of Inland Fisheries and Wildlife, for species appearing on the official state or federal list of endangered or threatened animal species;~~ high and moderate value deer wintering areas and travel corridors as defined by the Department of Inland Fisheries and Wildlife; seabird nesting islands as defined by the Department of Inland Fisheries and Wildlife; and critical spawning and nursery areas for Atlantic salmon as defined by the Department of Marine Resources; and

B. Except for solely forest management activities, for which "significant wildlife habitat" is as defined and mapped in accordance with section 480-I by the Department of Inland Fisheries and Wildlife, the following areas that are defined by the Department of Inland Fisheries and Wildlife and are in conformance with criteria adopted by the Department of Environmental Protection or are within any other protected natural resource:

- (1) Significant vernal pool habitat;
- (2) High and moderate value waterfowl and wading bird habitat, including nesting and feeding areas; ~~and~~
- (3) Shorebird nesting, feeding and staging areas.; and

(4) Habitat for state endangered and state threatened species listed under Title 12, section 12803, subsection 3 when the habitat is located within another protected natural resource or when any portion of the habitat is contained within the boundaries of a project site that requires approval from:

- (a) The department pursuant to Title 38, Chapter 3, Articles 5-A, 6, 7 and 8-A, except for activities or development taking place on a residential lot that is not part of a proposed multi-lot housing development; or,
- (b) The Land Use Planning Commission pursuant to Title 38, Chapter 3, Article 5-A or Title 12, Chapter 206-A for subdivisions and non-residential uses.



LD 1246: An Act to Include Endangered & Threatened Species Habitat in the Definition of "Significant Wildlife Habitat" Under the NRPA [w/ proposed amendment]

38 MRS §480-B Definitions

10. **Significant Wildlife Habitat** "Significant wildlife habitat" means:

A. The following areas to the extent that they have been mapped by the Department of Inland Fisheries and Wildlife or are within any other protected natural resource: ~~habitat, as defined by the Department of Inland Fisheries and Wildlife, for species appearing on the official state or federal list of endangered or threatened animal species; high and moderate value deer wintering areas and travel corridors as defined by the Department of Inland Fisheries and Wildlife; seabird nesting islands as defined by the Department of Inland Fisheries and Wildlife; and critical spawning and nursery areas for Atlantic salmon as defined by the Department of Marine Resources; and~~

B. Except for solely forest management activities, for which "significant wildlife habitat" is as defined and mapped in accordance with section 480-I by the Department of Inland Fisheries and Wildlife, the following areas that are defined by the Department of Inland Fisheries and Wildlife and are in conformance with criteria adopted by the Department of Environmental Protection or are within any other protected natural resource:

- (1) Significant vernal pool habitat;
- (2) High and moderate value waterfowl and wading bird habitat, including nesting and feeding areas; and
- (3) Shorebird nesting, feeding and staging areas.; and

(4) Habitat for state endangered and state threatened species listed under Title 12, section 12803, subsection 3 when the habitat is located within another protected natural resource or when any portion of the habitat is contained within the boundaries of a project site that requires approval from:

- (a) The department pursuant to Title 38, Chapter 3, Articles 5-A, 6, 7 and 8-A, except for activities or development taking place on a residential lot that is not part of a proposed multi-lot housing development; or,
- (b) The Land Use Planning Commission pursuant to Title 38, Chapter 3, Article 5-A or Title 12, Chapter 206-A for subdivisions and non-residential uses.



LD 1246: An Act to Include Endangered & Threatened Species Habitat in the Definition of "Significant Wildlife Habitat" Under the NRPA [w/ proposed amendment]

38 MRS §480-B Definitions

10. **Significant Wildlife Habitat** "Significant wildlife habitat" means:

A. The following areas to the extent that they have been mapped by the Department of Inland Fisheries and Wildlife or are within any other protected natural resource: ~~habitat, as defined by the Department of Inland Fisheries and Wildlife, for species appearing on the official state or federal list of endangered or threatened animal species;~~ high and moderate value deer wintering areas and travel corridors as defined by the Department of Inland Fisheries and Wildlife; seabird nesting islands as defined by the Department of Inland Fisheries and Wildlife; and critical spawning and nursery areas for Atlantic salmon as defined by the Department of Marine Resources; and

B. Except for solely forest management activities, for which "significant wildlife habitat" is as defined and mapped in accordance with section 480-I by the Department of Inland Fisheries and Wildlife, the following areas that are defined by the Department of Inland Fisheries and Wildlife and are in conformance with criteria adopted by the Department of Environmental Protection or are within any other protected natural resource:

- (1) Significant vernal pool habitat;
- (2) High and moderate value waterfowl and wading bird habitat, including nesting and feeding areas; and
- (3) Shorebird nesting, feeding and staging areas.; and

(4) Habitat for state endangered and state threatened species listed under Title 12, section 12803, subsection 3 when the habitat is located within another protected natural resource or when any portion of the habitat is contained within the boundaries of a project site that requires approval from:

- (a) The department pursuant to Title 38, Chapter 3, Articles 5-A, 6, 7 and 8-A, except for activities or development taking place on a residential lot that is not part of a proposed multi-lot housing development; or,
- (b) The Land Use Planning Commission pursuant to Title 38, Chapter 3, Article 5-A or Title 12, Chapter 206-A for subdivisions and non-residential uses.



MDIFW's Resource Data:

Applications: Species Occurrence Tracking, Beginning with Habitat Program,
Land Conservation Priorities, & Environmental Review

Left Panel (current H-MAP)

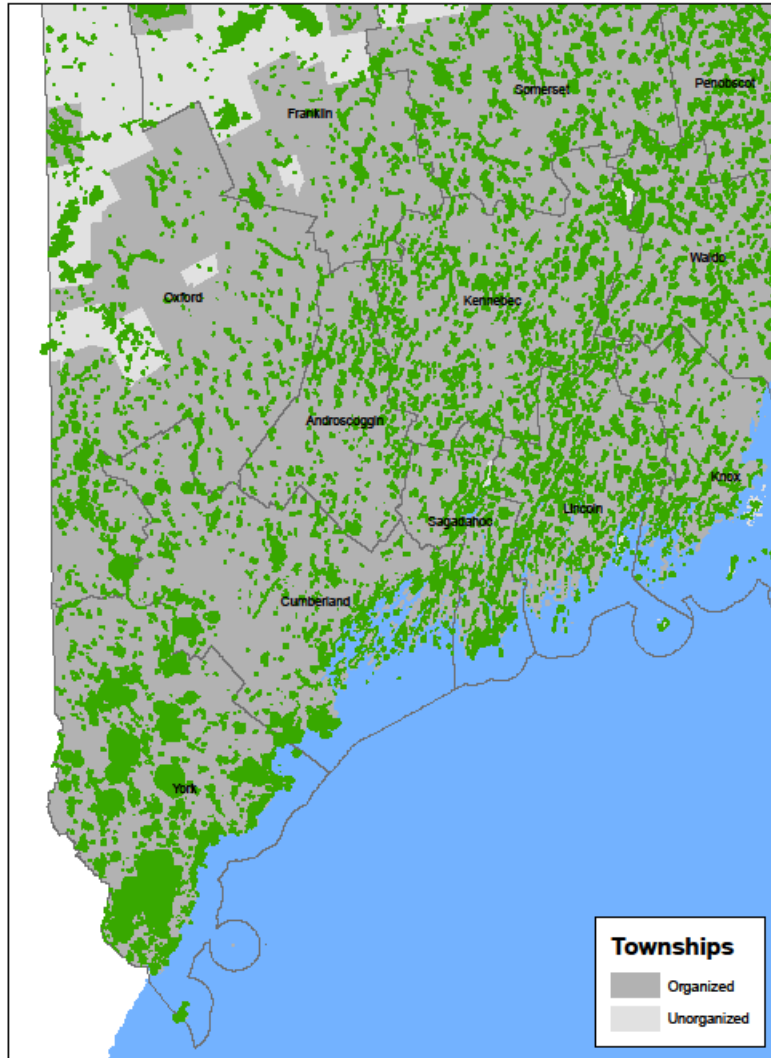
- E & T species (57)
- SC species
- Significant Vernal Pools
- IWWHs & TWWHs
- Shorebird habitats
- Seabird Nesting Islands
- DWAs
- Brook Trout habitat
- Essential Habitat

Right Panel (new ET/SWH layer)

E & T species (26): < 0.7% of state area



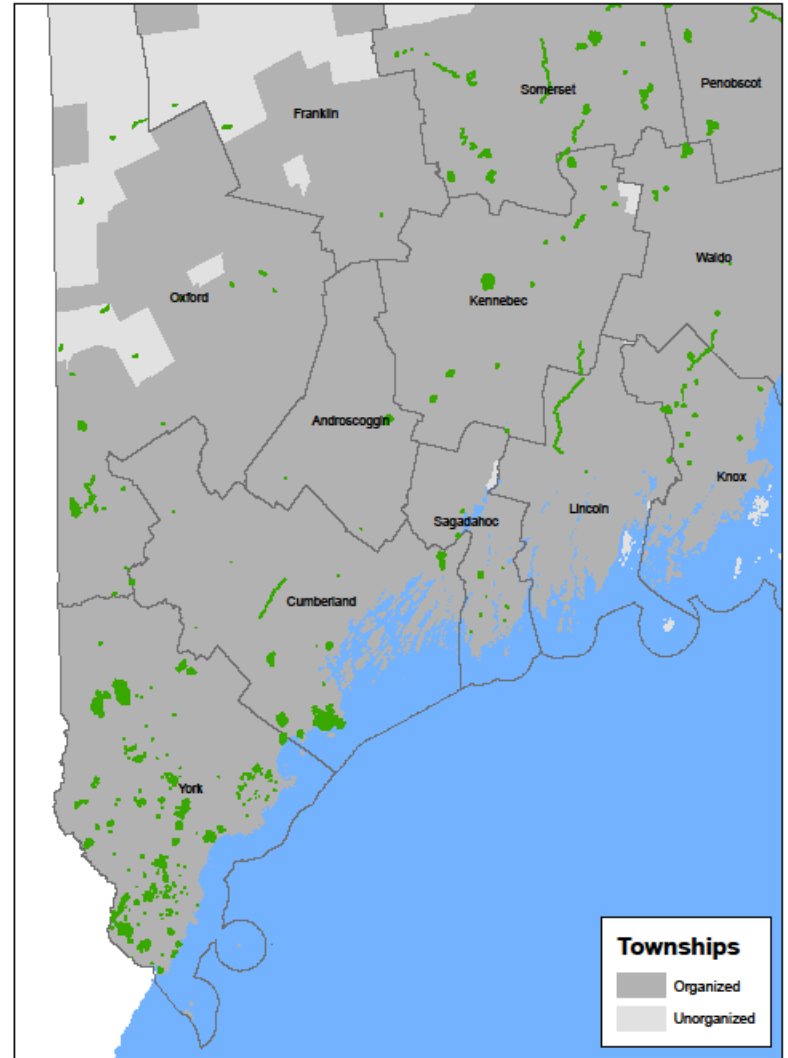
HMAP Data for Southern Maine



Maine Dept. of Inland Fisheries and Wildlife, 2023

1:1,000,000

Mapped Habitat for Select Endangered/Threatened Species for Southern Maine

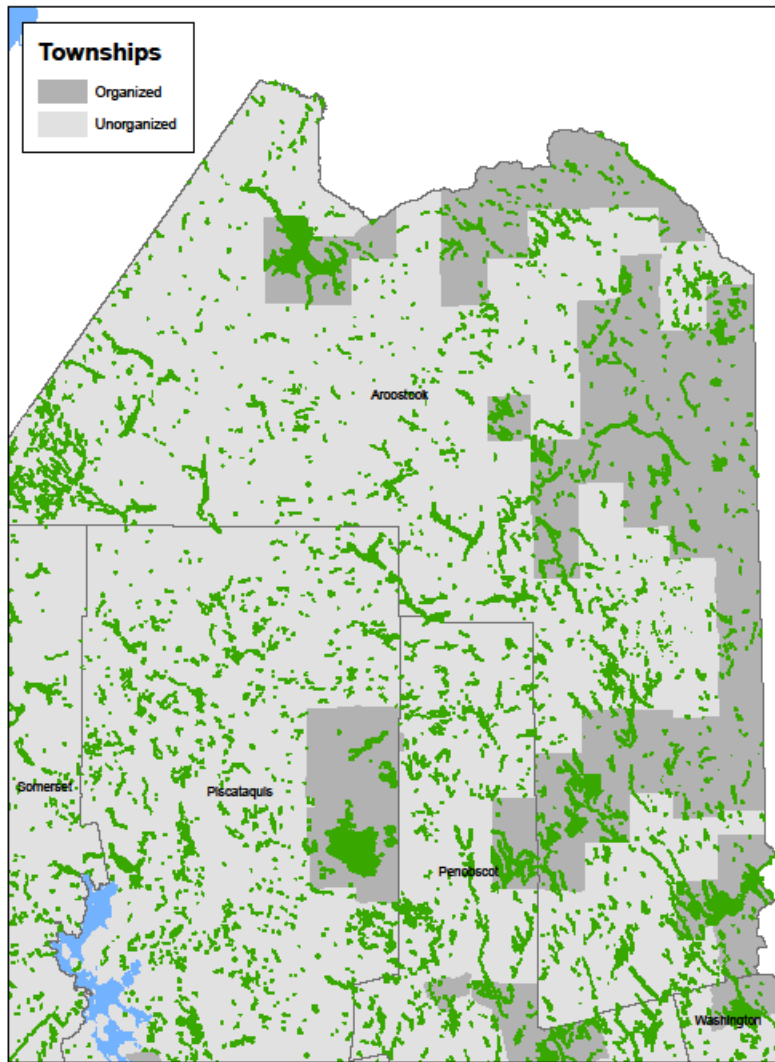


Maine Dept. of Inland Fisheries and Wildlife, 2023

1:1,000,000



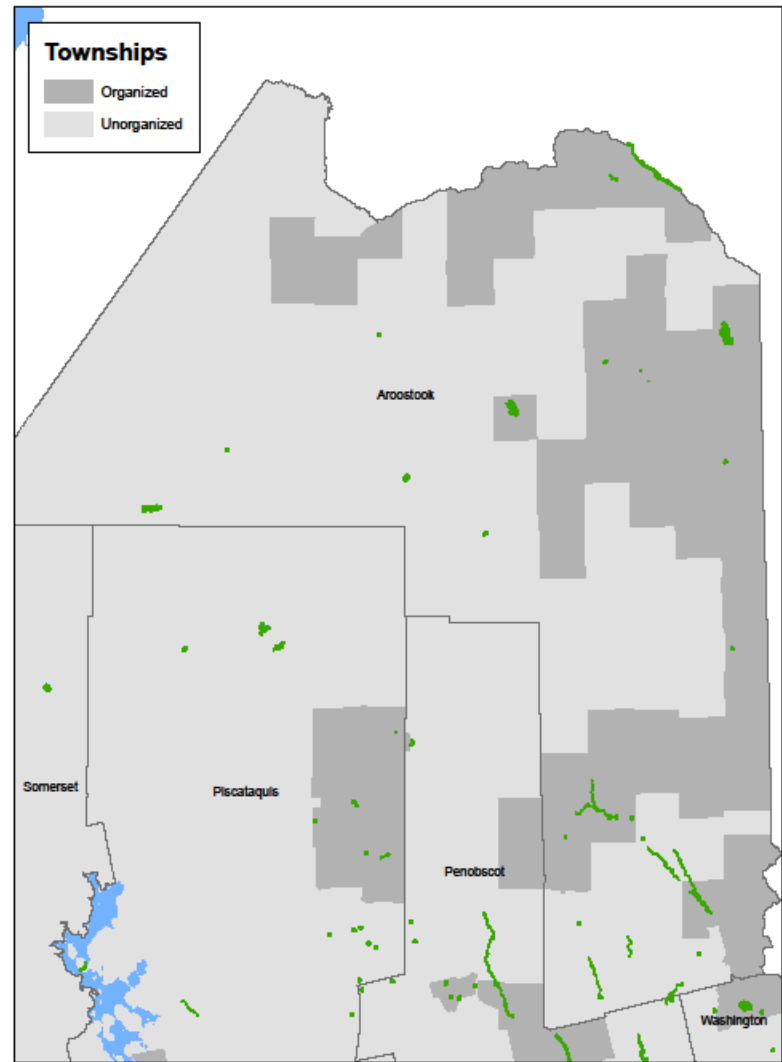
HMAP Data for Northern Maine



Maine Dept. of Inland Fisheries and Wildlife, 2023

1:1,000,000

Mapped Habitat for Select Endangered/Threatened Species for Northern Maine



Maine Dept. of Inland Fisheries and Wildlife, 2023

1:1,000,000





Scenario 1:

Stream crossing and wetland
impact (>4300 sf) – NRPA permit

E&T off-site

NO IFW contact by DEP/LUPC





Scenario 3:

Wetland impact (>4,300 sf) and stream crossing – NRPA permit

E&T close but not *directly* impacted.

NO IFW contact by DEP
(LUPC already contacts IFW)





Scenario 2:

No agency permit
(except maybe stormwater)

E&T on site but not impacted

NO IFW contact by DEP
(LUPC already contacts IFW)





Scenario 4:

No agency permit
(except maybe stormwater)

Development impacts to ET

NO IFW contact by DEP
(LUPC already contacts IFW)





Scenario 5:

Stream crossing, and wetland impact (>4300 sf) – NRPA permit

E&T occurs in wetland & stream (wetland = WOSS)

YES contact IFW by DEP/LUPC





Scenario 5:

Stream crossing, and wetland impact (>4300 sf) – NRPA permit

E&T occurs in wetland & stream (wetland = WOSS)

YES contact IFW by DEP/LUPC





Scenario 6:

Wetland impact (>4300 sf),
stream crossing – NRPA permit

E&T in upland and impacted

YES contact IFW by DEP/LUPC





Scenario 6:

Wetland impact (>4300 sf),
stream crossing

E&T in upland and impacted

YES contact IFW by DEP/LUPC



Questions & Comments

